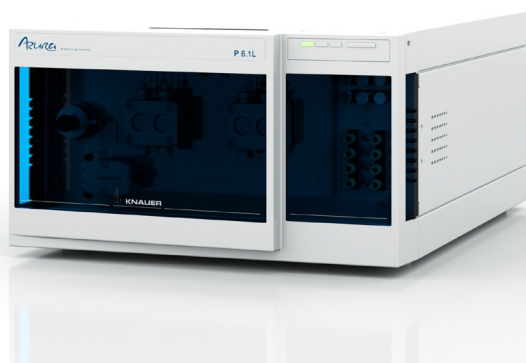


Knauer AZURA P 6.1L

Isocratic analytical HPLC pump

Article number: APH30EA



The AZURA pump P 6.1L uses technology to overcome the challenges of pumping LC solvents at high pressure and high flow rates.

The pump can deliver flow in the range of 0.001 – 10 mL/min at pressures up to 700 bar.

The integrated AZURA inline filter is completing the analytical AZURA HPLC pump and turn this pump into a working horse in the lab.

For biocompatible applications or ion chromatography this pump is also available with a complete metal free design.

Key features

- Isocratic analytical HPLC pump offers wide range of flow rates (0.001-10 ml/min)
- Pressure sensor with integrated and replaceable AZURA inline filter
- Flexible 1/16" capillaries
- Pump version for biocompatible applications with a metal free design available
- Integrated compressibility compensation
- Integrated leak management
- Constant pressure operation mode

Details

Pump Type	isocratic HPLC pump
Solvent delivery	
Pump head	10 ml/min
Pulsation compensation	active pressure and pulsation compensation
Pump head materials	stainless steel
Maximum delivery pressure	70 Mpa (700 bar, 10150 psi) up to 5 ml/min, 40 MPa (400 bar, 5800 psi)
Flow rate range	0.001 - 10 ml/min 0.02 - 10 ml/min (recommended)
Flow rate increment	0.001 ml/min
Flow rate accuracy	± 1%, measured at 5 - 80% of flow range using ethanol
Flow rate precision	< 0.1 % RSD based on retention time at constant room temperature
Pulsation	< 2 % amplitude (typically < 1.3 %) or < 0.3 MPa (3 bar), whatever is greater, at 1 mL/min ethanol, at all pressures > 1 MPa (10 bar, 147 psi).
Delay volume	60 µl
Piston seal washing	standard
System protection	soft start, P _{min} and P _{max} are programmable
Wetted Materials	stainless steel, graphite fiber reinforced PTFE, FKM, PEEK, sapphire, aluminium oxide (Al ₂ O ₃)

Communication

Control	LAN; analog and event controlled
Analog inputs	0-10 V
Analog control input	flow rate

Technical parameters

Ambient conditions	temperature range: 10-40°C; 50-104°F air humidity: below 90 % humidity (non condensing)
Leak sensor	yes

General

Power supply	voltage range: 100 - 240 V, 50 - 60 Hz
Dimensions	361 x 208.2 x 523 mm (W x H x D)
Weight	11.5 kg

Visit www.sercolab.be or www.separations.nl for details on complete HPLC systems, HPLC columns and Accessories.

Contacts Belgium - Luxemburg:

SerCoLab bvba Tel +32 (0)3 640 33 15
Westkaai 7 Fax +32 (0)3 644 04 05
B-2170 Merksem E-mail: info@sercolab.be

Contacts The Netherlands:

Separations A.I. Tel +31 (0)78 62 20 500
Veersedijk 59 Fax +31 (0)78 68 13 059
3341LL Hendrik-Ido-Ambacht E-mail: info@separations.nl